

# #681 Transfer Cliner



ISO 9001-2000 CERTIFIED

## *An Infinite Position Recliner and Transfer Stretcher in One Chair*

Winco's Transfer Cliner has all the features and options you expect in a transfer chair and more.

Features Include:

- ~ Independent Leg Rest
- ~ Adjustable, Fold-Away Foot Rest
- ~ Dual Drop Arms
- ~ Safety Belt
- ~ Rear Push-Handle

All of these features are combined  
to make our transfer cliner a  
perfect choice!



#681  
Transfer Cliner



Proudly Made in the USA!

# #681 Transfer Cliner



ISO 9001-2000 CERTIFIED



Infinite Position Back Uses a Gas Spring

Standard Seat Belt Provides Additional Safety While Transporting the User



Lays Completely Flat for Easy Transfers or to Recline User in a Resting Position

Convenient Height Push Handle on the Back



Quick Release Tabs for Lowering and Raising Foot and Leg Rest

Durable Powder-Coated Steel Frame

Adjustable, Fold-Away Foot Rest

Left/Right Drop Arms have 3 Positions Including Seat-Level

## VINYL SELECTION

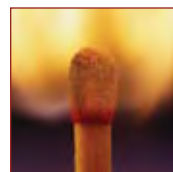
(Printed vinyl colors may vary slightly from actual colors.)

Royal Blue	Taupe	Moss Green	Hunter Green	Grey	Burgundy	Mauve	Blueridge	Grotto	Eucalyptus
<b>02</b>	<b>03</b>	<b>04</b>	<b>06</b>	<b>07</b>	<b>14</b>	<b>16</b>	<b>17</b>	OPTIONAL <b>32</b>	OPTIONAL <b>33</b>
OPTIONAL <b>34</b>	OPTIONAL <b>37</b>	OPTIONAL <b>41</b>	OPTIONAL <b>42</b>	OPTIONAL <b>43</b>	OPTIONAL <b>44</b>	OPTIONAL <b>60</b>	OPTIONAL <b>61</b>	OPTIONAL <b>62</b>	OPTIONAL <b>63</b>
Aubergine	Navy	Briar	Rosebud	Evergreen	Nightshade	Pyrite	Gypsum	Ice Blue	Cypress

## #681 SPECIFICATIONS

## OPTIONS

SEAT HEIGHT:	22" (55.9cm)
SEAT WIDTH:	21" (53.3cm)
SEAT DEPTH:	21" (53.3cm)
OVERALL HEIGHT:	56" (142.2cm)
OVERALL WIDTH:	27.5" (69.9cm)
BACK HEIGHT:	33" (83.8cm)
WEIGHT:	114 lbs. (51.7kg)
WEIGHT CAPACITY:	400 lbs. (181.4kg)
FOOTPRINT:	27.5" x 40" (69.9cm x 18.1cm)
FOOTPRINT (RECLINED):	27.5" X 76" (69.9cm x 34.5cm)



**TB-133**  
Where Required  
**#681T**



**IV Option**  
**IV**