

**New  
From SDI!**

# Astra<sup>★</sup>100™

## The most affordable way to screen for COPD and asthma!

Whether testing lung function for asthma and COPD or pre-screening and monitoring diabetic patients when prescribing Exubera®, the Astra100 Spirometer provides ease of use and accurate results in a cost-efficient package.

Test right in your own office rather than sending the patient to a specialist – save time and money for your practice and your patients.

### Astra100 Features

- Easy to use
- Fast, accurate results
- Reimbursable – call us for applicable codes
- FVC, FEV<sub>1</sub>, FEV<sub>6</sub>, FEV<sub>1</sub>/FVC, FEV<sub>1</sub>/FEV<sub>6</sub>, PEF
- Direct report printing
- Pays for itself with as few as 30 patient tests!

**News**

### Prescribing EXUBERA?

Before prescribing inhalable insulin, a pulmonary baseline must first be established through a spirometry test.



Starter pack of 10 AstraGuard™ PFT filters, designed expressly for the Astra100, included with every purchase.



Free padded, high impact plastic carrying/storage case keeps unit and accessories together and ready to use.

EXUBERA® is a registered trademark of Pfizer, Inc., New York, NY.

Your dealer is:

Aria Medical Equipment  
www.ariamedical.com  
sales@ariamedical.com  
(800) 330-3591

**sdi**

DIAGNOSTICS

*The Spirometry Source*

# Astra100™ Spirometer

## Technical Specifications

### Parameters Measured

Forced vital capacity: FVC, FEV<sub>1</sub>, FEV<sub>6</sub>, FEV<sub>1</sub>/FVC,  
FEV<sub>1</sub>/FEV<sub>6</sub>, PEF

### Measurement Scale (BTPS)

Flow range: 0–16 L/s

Volume (L): 0–10

Measurement Method: Infrared Interruption

Dynamic flow resistance: <1.5 cm H<sub>2</sub>O/L/sec @ 14 L/sec

### Precision of measurements (BTPS)

At highest volume: +/- 3% or 50 mL

At highest flow: +/- 5% or 150 mL

Time related precision: .5%

Volume resolution: <6mL

Sampling frequency: 50Hz

Keyboard: 5 keys

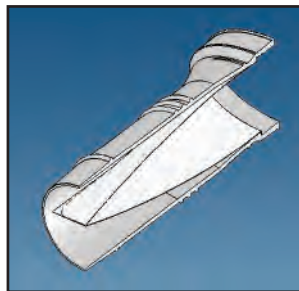
Communication port: USB to printer

Dimensions: 5.75 x 3.25 x 4.0 in.

Power supply: 2 x 1.5DC Alkaline or NiMH batteries

**Astra100 is compatible with printers using USB connection and PCL6 drivers.**

**AstraGuard™ PFT filters are designed exclusively for Astra spirometers.**



Cross-section of the mouthpiece filter shows placement of interior media. Edge of filter media is bonded to the exterior housing to form a tight seal.

The filter media is tailored to fit inside every mouthpiece, providing an effective guard against cross-contamination.

**sdi**

DIAGNOSTICS

*The Spirometry Source*