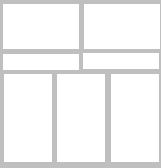


MODEL 1036-24 STANDARD AUTOPSY TABLE

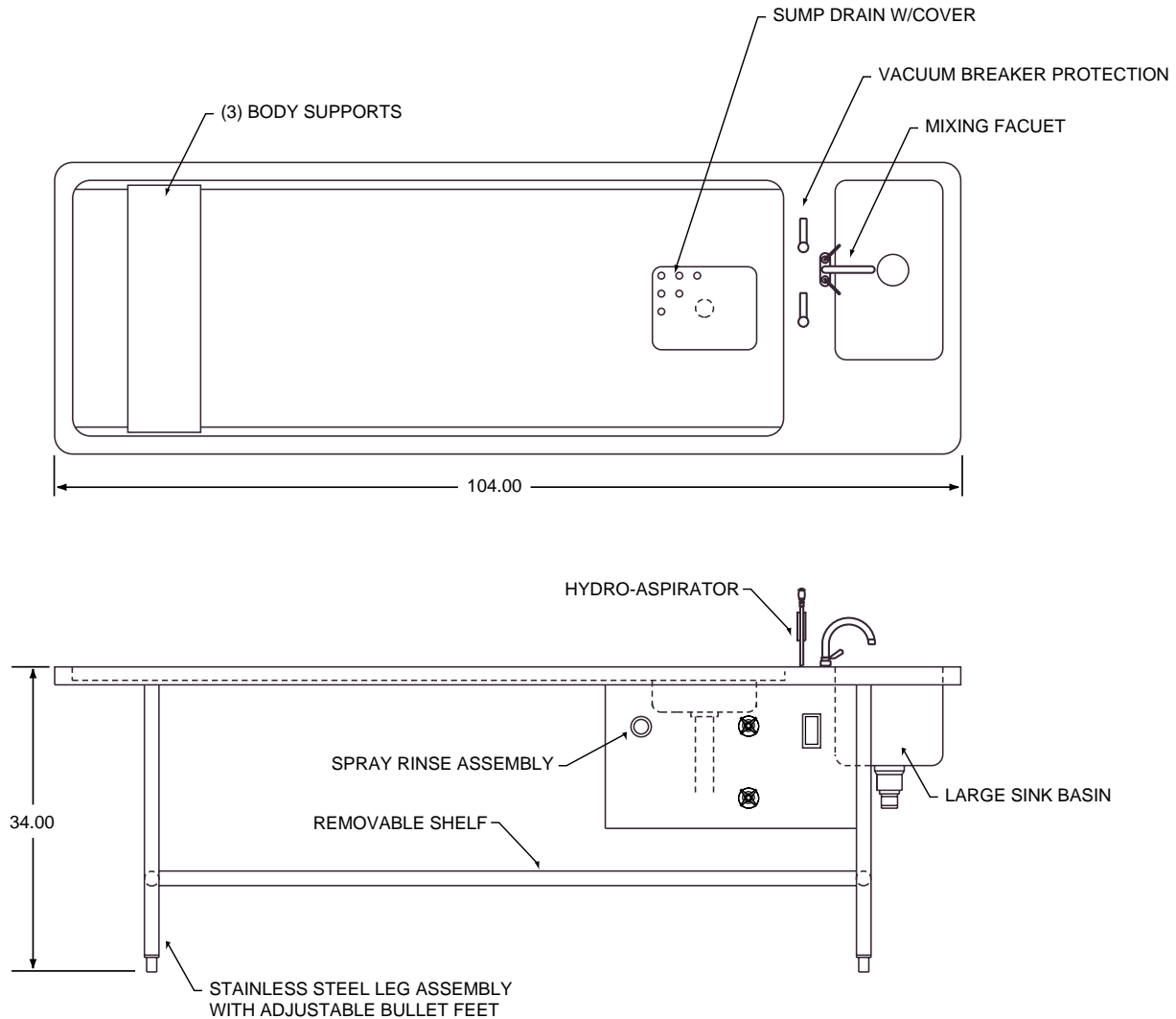


The Model 1036-24 is an economical and practical table which provides all necessary features to perform routine autopsy or dissection procedures. It is mounted on four stainless steel legs with adjustable feet.

- Hand Spray
- Waterproof Electrical Outlet - GFCI
- Hydro-Aspirator Assembly
- Stainless Steel Panel with Master Mixing Valve
- Large Sink Basin with Lever Handle Drain
- Plumbing and Electrical Lines are factory installed
- All Stainless Steel Construction



MODEL 1036-24 LAYOUT DRAWING and OPTIONAL FEATURES



OPTIONAL EQUIPMENT AND ACCESSORIES:

- Post Mortem Scale with Scale Pole
- Table End Rinse with cold water control valve and vacuum breaker
- Gas / Air Cocks
- Aspirator Bottle Collection System
- Emergency Eyewash Assembly
- Full Length Stainless Steel Body Supports
- Centimeter or inch markings
- Over-the-body Dissecting Tray
- Headrest