

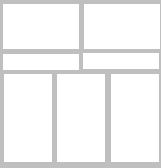
MODEL 1036-10 WALL MOUNTED AUTOPSY STATION, CENTER SINK



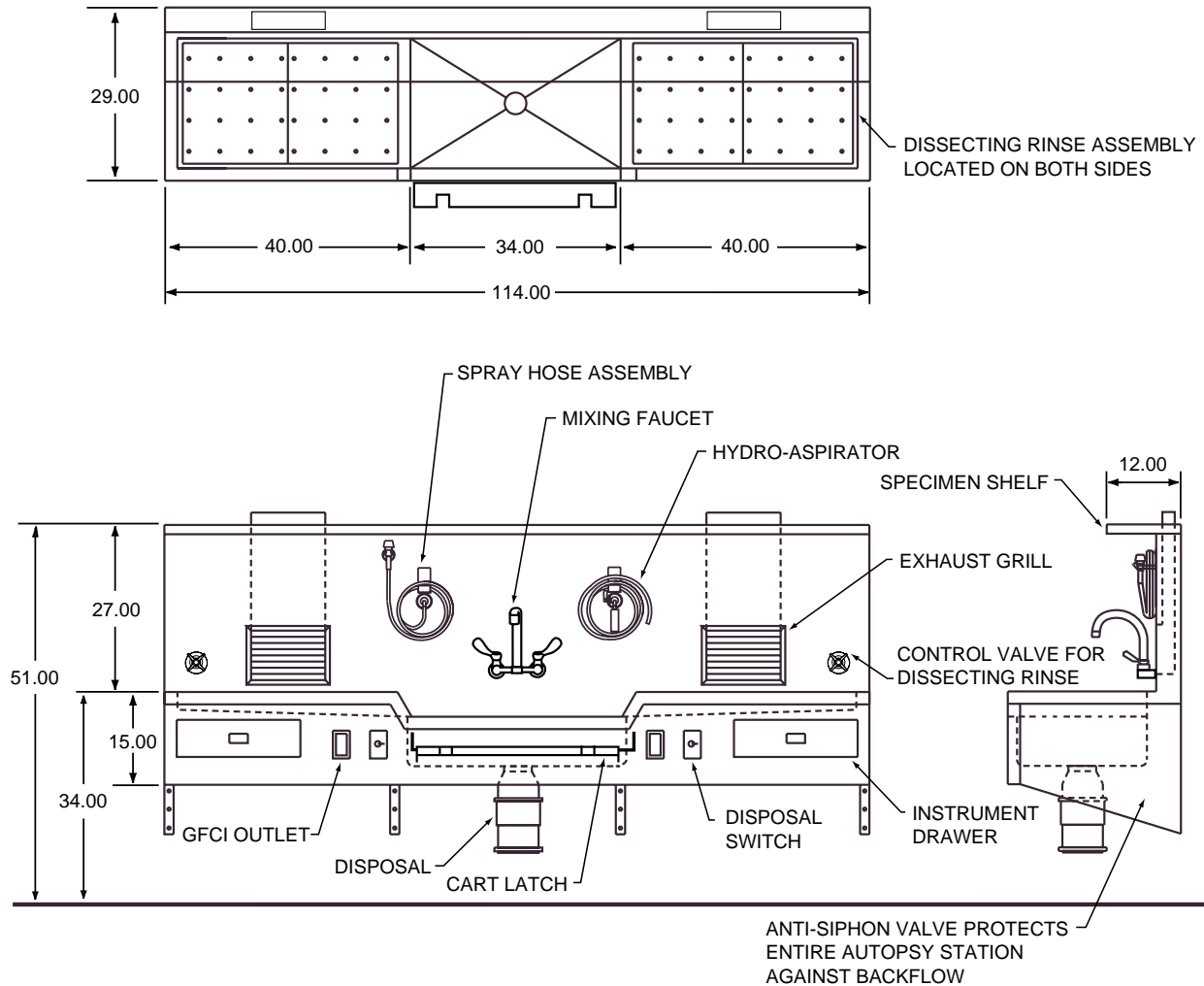
STANDARD DESIGN FEATURES

- All stainless steel construction with heliarc welded seams and joints, ground and polished to a smooth finish
- Deluxe Aspirator and vacuum breaker with reverse flow for additional waste removal; “reverse flow” feature instantly relieves suction clogging by providing a reverse pressure of water.
- Hot and Cold water fixture with convenient goose-neck faucet and wrist-blade handles.
- Spray Hose Assembly with cold water control valve, nozzle and 10 feet of flexible hose
- Two Dissecting Area Rinse Assemblies with cold water control valves
- Heavy-duty Commercial Waste Disposal, 1/2 hp
- Two Large Instrument Drawers
- Large radii on all inside corners for easy cleaning and required sanitation.
- Large single-compartment sink with rapid and positive drainage.
- Cart-to-sink Locking Mechanism with slide latch which can be accessed from either side of the carrier
- Waterproof electrical outlets and switches
- Plumbing and Electrical lines are factory installed and require only minimum installation.

Plumbing fixtures can be located in varying positions depending on your needs and desired work environment.



MODEL 1036-10 LAYOUT DRAWING and OPTIONAL FEATURES



OPTIONAL EQUIPMENT AND ACCESSORIES

- Heavy-Duty commercial disposal (3/4hp, 1hp, 2hp)
- Gas / Air Valves
- Additional Hot & Cold Water Mixing Faucet
- Post Mortem Scale with Scale Pole and Bracket
- Stainless Steel Shelf for platform type scale
- Instrument Dissecting Tray
- Exhaust Ducts for connection to building ventilation system
For exterior connection at top of station or concealed connection through rear of station
- Fluorescent Light Fixtures over the work area
- Organ Rinse
- Evidence Screen for sink drain
- Eyewash Assembly
- Integral Raised Dissecting Areas per your requirements